

# **Admission call for the academic year 2025-2026 for Extra-UE international students for first-cycle and single-cycle degree courses**

## MENU

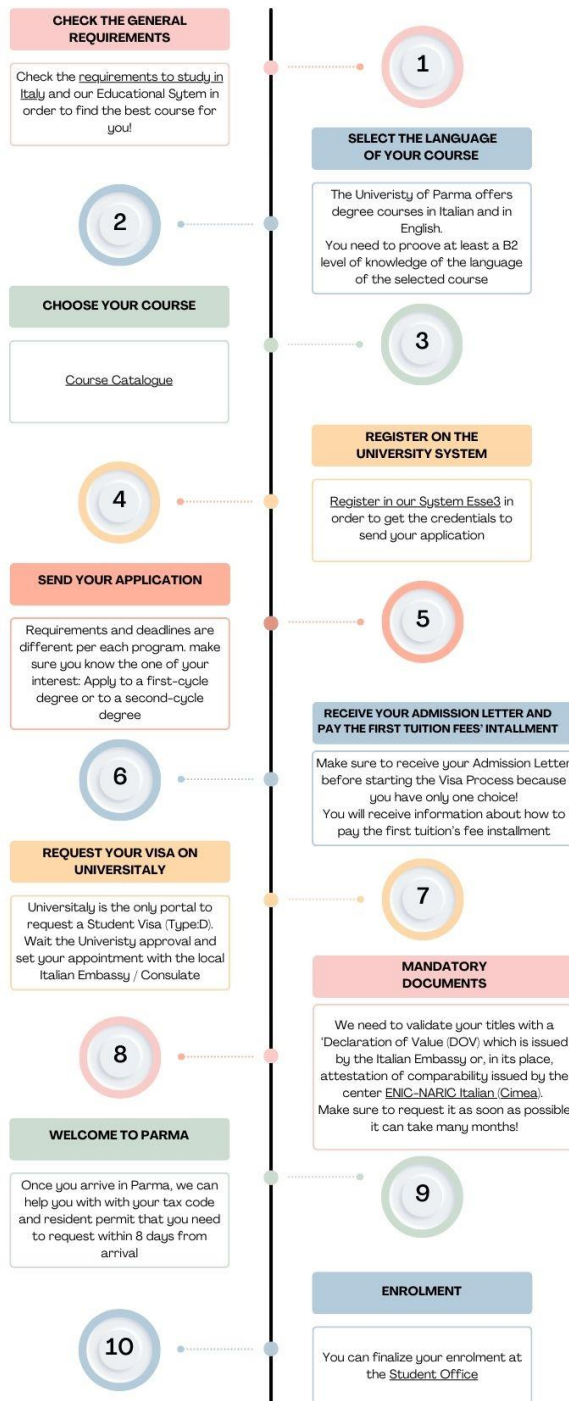
<b>MENU</b> .....	2
The three main steps of your application.....	5
Admissions quotas for International Students from non-EU countries.....	6
<b>SELECT THE LANGUAGE OF YOUR COURSE</b> .....	7
Italian Language: what is the level required? .....	7
The Italian language competence test.....	7
English Language: what is the level required? .....	8
The Italian Educational System .....	9
<b>SEND YOUR APPLICATION</b> .....	10
First-cycle degree courses.....	10
List of Courses.....	10
Requirements .....	13
<b>FAQ (FREQUENTLY ASKED QUESTIONS)</b> .....	17
General requirements to access the Italian University System .....	17
Course catalogue .....	18
Register on the University System (Esse3).....	19
Admission Letter.....	20
Pre-Enrolment and enrolment fee.....	20
University and Visa Application to the Embassy.....	21
Mandatory Documents.....	22
Welcome in Parma.....	24
<b>USEFUL INFORMATION FOR STUDENTS</b> .....	24
Tax code .....	24
Resident Permit .....	24
Accommodation .....	24
Student Card .....	24
University Library System .....	24
Affiliated canteens.....	24
Amounts of fees and contributions .....	24
ER.GO benefits and scholarships .....	24
Living the city.....	24
Cost of living in Parma .....	24
<b>CONTACTS</b> .....	25



## THE ADMISSION PROCESS EXPLAINED

Timeline

### THE ADMISSION PROCESS



[www.unipr.it](http://www.unipr.it)

## The three main steps of your application

### ✓ Step 1 Pre-assessment

Check if your previous studies match the selected course of your interest. If you have all the requirements, send your request of pre-evaluation following the below procedure:

1. Please notice that **before starting** the pre-evaluation procedure, **students must [register](#) on the University computer system (ESSE3)**.
2. Secondly, you'll need to [establish the University credential](#);
3. Finally, send your request of evaluation and be aware of the procedure and deadlines. The requirements are different for each course. [Please find your course in the list below](#) and follow the instructions to send your application.
4. Get your **"Acceptance Letter"**

### ✓ Step 2 Visa application on Universitaly

Non-EU students with residency abroad who wish to enrol in study courses must obtain an entry visa for study Enrolment at a University (type D: "national"). The procedures for the next year are available at this website <http://www.studiare-in-italia.it/studentistranieri>.

1. **Register on the [Universitaly portal](#)** . by the 30th of July 2025.
2. After your registration, you can access your reserved area to **Send your application** to obtain an entry VISA to Italy. All candidates must apply for a university study/enrolment visa at the Italian consular diplomatic mission of the country of residence. Non-EU citizens residing in a European country must select the Italian Embassy/Consulate in the European Country where they reside.
3. When registering on the Universitaly portal, it will be mandatory to upload, among other required documents, the **"Acceptance Letter"** obtained through the "Step 1 Pre-assessment" mentioned above.

**Attention!** The approval of the pre-enrolment request for a study course does not automatically imply the issue of the visa, which is the exclusive jurisdiction of the diplomatic-consular missions and does not imply automatically the Enrolment in the degree course that will be completed only and exclusively if the candidate correctly submits all the enrolment mandatory documents by the deadline for the course.

### ✓ Step 3 Enrolment on Esse3

Once the outcome of your Universitaly pre-application has been confirmed, please check the access procedures to [proceed to matriculate/enrol online](#).

## Admissions quotas for International Students from non-EU countries

This selection is addressed to non-EU citizens and non-residents in Italy.



In the event that an applicant has dual citizenship, and one of the two citizenships is Italian or EU citizenship (EU countries), the procedures for admission to courses at the University of Parma are the same as for EU students. Therefore, they are required to follow the procedures foreseen for all such students (art. 26 - L. 189/2002).

**Do you need a Visa?** You can check your personal situation on the database directly on the [Farnesina website \(Ministero degli Affari Esteri e della Cooperazione Internazionale\)](#)

# SELECT THE LANGUAGE OF YOUR COURSE

## Italian Language: what is the level required?

To access the study courses, it is necessary to have an **Italian language proficiency of at least B2** level according to the [Common European Framework of Reference](#).

### **IMPORTANT! It is mandatory to reach the Italian level before enrolment**

The University of Parma recognizes the following certifications:

- Università per stranieri di Perugia [CELI](#), Università per stranieri di Siena [CILS](#), Università Roma Tre [ROMA3](#), Società “Dante Alighieri” [PLIDA](#);) \*
- Declaration of belonging to one of the cases of exemption from the Italian language test (please check the cases exemption of the language test at the following page [Studiare in Italia](#).) \*
- If you do not have one of the recognized certificates or if you are not in one of the categories of exemptions from the test, please attach a declaration to have the Italian Test at the University of Parma.
- Alternatively, the University of Parma organises an ad hoc session to test knowledge of Italian “**The Italian language competence test**”.

\*In accordance with the Ministerial Memorandum of the MUR published every year, on the [Studiare in Italia](#).

## The Italian language competence test

If you already have an international certification proving Italian language competence at least of level B2, you don't have to take the Italian language test. If you have chosen a degree course taught in Italian and you do not have any international certification proving Italian language competence at least of level B2, you must take the **Italian language test**.

The exam is held online (synchronous modality) through **Microsoft Teams** and the [University of Parma's e-learning platform](#). The Italian language test of the University of Parma is valid for **2 years**.

For more information about deadlines and registration to the test please follow the link: [the Italian Language test](#)

## English Language: what is the level required?

To access programs taught in English it is mandatory to reach at least a B2 level (C.E.F.R.). The University of Parma recognizes the following certifications:

Ente Certificatore	Level	Certificazione di lingua inglese per le 4 abilità
Cambridge English Language Assessment	C2	Cambridge English: Proficiency (CPE)
	C1	Cambridge English: Advanced (CAE) Cambridge English: Business Higher (BEC Higher)
		B2
City and Guilds (Pitman)	C2	Level 3 Certificate in International ESOL Diploma Mastery C2
	C1	Level 2 Certificate in International ESOL Diploma Expert C1
	B2	Level 1 Certificate in International ESOL Diploma Communicator B2
Edexcel / Pearson Ltd	C2	PTE General Level 5 Proficient
	C1	PTE General Level 4 Advanced
	B2	PTE General Level 3 Upper Intermediate
EDI (LCCIEB)	C1	JETSET Level 6 English for Business Level 4
	B2	JETSET Level 5 English for Business Level 3 English for Commerce Level 3
IELTS	C2	IELTS band 8.5 - 9.0
	C1	IELTS band 7.0 - 8.0
	B2	IELTS band 5.5 - 6.5
TCL Trinity College London	C2	Integrated Skills in English (ISE) IV
	C1	Integrated Skills in English (ISE) III
	B2	Integrated Skills in English (ISE) II
TOEFL ETS	C1	TOEFL score 110-120
	B2	TOEFL score 87-109

For specific information about exemption from the above certification please refer to the single course web pages.



## The Italian Educational System

Our university offers study programmes both in Italian and English. This is a brief diagram of the Italian Educational System. The University of Parma offers all these kinds of study programs.

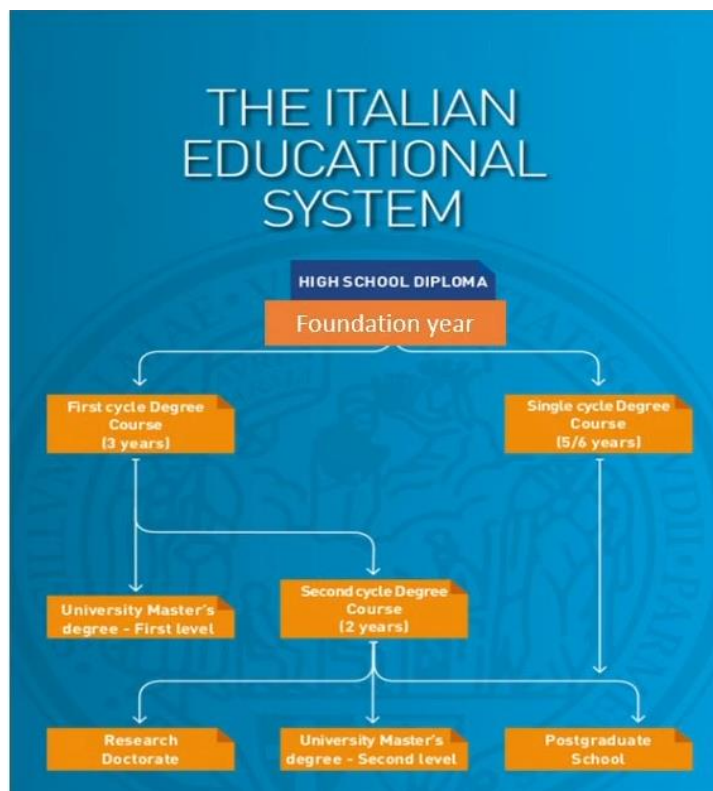


Figure 1 The Italian Educational System

## Foundation Year



The Foundation Year is a preparatory course lasting 10 or 11 months addressed to foreign students interested in enrolling in a course of study at the University of Parma or another Italian university or at a music Conservatory or higher institution of music studies (ISSM).

If you have not acquired **12 years of schooling**, you can attend the Foundation Year to recover the missing year to access the University.

Website: <https://foundationyear.unipr.it/en/> Contacts: [foundationyear@unipr.it](mailto:foundationyear@unipr.it)

## SEND YOUR APPLICATION

### First-cycle degree courses

#### List of Courses

Language of the course	Type of study course	DEGREE PROGRAMS	Admissions quotas for international students with VISA	Admissions quotas for Marco Polo students
		<b>DEPARTMENT OF HUMANITIES, SOCIAL SCIENCES AND CULTURAL INDUSTRIES</b>		
English	Bachelor Degree (3 years)	<a href="#">GLOBAL STUDIES FOR SUSTAINABLE LOCAL AND INTERNATIONAL DEVELOPMENT AND COOPERATION</a>	20	0
Italian	Bachelor Degree (3 years)	<a href="#">BENI ARTISTICI, LIBRARI E DELLO SPETTACOLO</a>	40	2
Italian	Bachelor Degree (3 years)	<a href="#">CIVILTÀ E LINGUE STRANIERE MODERNE</a>	50	2
Italian	Bachelor Degree (3 years)	<a href="#">COMUNICAZIONE E MEDIA CONTEMPORANEI PER LE INDUSTRIE CREATIVE</a>	50	3
Italian	Bachelor Degree (3 years)	<a href="#">LETTERE</a>	40	1
Italian	Bachelor Degree (3 years)	<a href="#">SCIENZE DELL'EDUCAZIONE E DEI PROCESSI FORMATIVI</a>	50	0
Italian	Bachelor Degree (3 years)	<a href="#">STUDI FILOSOFICI</a>	40	3
		<b>DEPARTMENT OF LAW, POLITICS AND INTERNATIONAL STUDIES</b>		

Italian	Bachelor Degree (3 years)	<a href="#">SCIENZE POLITICHE E DELLE RELAZIONI INTERNAZIONALI</a>	50	5
Italian	Bachelor Degree (3 years)	<a href="#">SERVIZIO SOCIALE</a>	40	1
Italian	Single-cycle Degree (5 years)	<a href="#">GIURISPRUDENZA</a>	46	3
		<b>DEPARTMENT OF ENGINEERING AND ARCHITECTURE</b>		
Italian	Bachelor Degree (3 years)	<a href="#">COSTRUZIONI, INFRASTRUTTURE E TERRITORIO</a>	36	0
Italian	Bachelor Degree (3 years)	<a href="#">INGEGNERIA CIVILE E AMBIENTALE</a>	36	0
Italian	Bachelor Degree (3 years)	<a href="#">INGEGNERIA DELLE TECNOLOGIE INFORMATICHE</a>	36	0
Italian	Bachelor Degree (3 years)	<a href="#">INGEGNERIA GESTIONALE</a>	36	0
Italian	Bachelor Degree (3 years)	<a href="#">INGEGNERIA INFORMATICA, ELETTRONICA E DELLE TELECOMUNICAZIONI</a>	36	0
Italian	Bachelor Degree (3 years)	<a href="#">INGEGNERIA MECCANICA</a>	36	2
Italian	Bachelor Degree (3 years)	<a href="#">DESIGN SOSTENIBILE PER IL SISTEMA ALIMENTARE</a>	36	0
		<b>DEPARTMENT OF CHEMISTRY, LIFE SCIENCES AND ENVIRONMENTAL SUSTAINABILITY</b>		
Italian	Bachelor Degree (3 years)	<a href="#">BIOLOGIA</a>	36	1
Italian	Bachelor Degree (3 years)	<a href="#">BIOTECNOLOGIE</a>	20	1
Italian	Bachelor Degree (3 years)	<a href="#">CHIMICA</a>	20	2
Italian	Bachelor Degree (3 years)	<a href="#">SCIENZA DEI MATERIALI</a>	20	1

Italian	Bachelor Degree (3 years)	<a href="#">SCIENZE DELLA NATURA E DELL'AMBIENTE</a>	20	1
Italian	Bachelor Degree (3 years)	<a href="#">SCIENZE GEOLOGICHE</a>	20	3
		<b>DEPARTMENT OF FOOD AND DRUG</b>		
Italian	Bachelor Degree (3 years)	<a href="#">SCIENZE E TECNOLOGIE ALIMENTARI</a>	20	1
Italian	Bachelor Degree (3 years)	<a href="#">SCIENZE GASTRONOMICHE</a>	20	2
Italian	Single-cycle Degree (5 years)	<a href="#">CHIMICA E TECNOLOGIA FARMACEUTICHE</a>	20	1
Italian	Single-cycle Degree (5 years)	<a href="#">FARMACIA</a>	20	1
Italian	Bachelor Degree (3 years)	<a href="#">QUALITÀ E APPROVVIGIONAMENTO DI MATERIE PRIME PER L'AGRO-ALIMENTARI</a>	20	0
		<b>DEPARTMENT OF ECONOMICS AND MANAGEMENT</b>		
Italian	Bachelor Degree (3 years)	<a href="#">ECONOMIA E MANAGEMENT</a>	50	20
Italian	Bachelor Degree (3 years)	<a href="#">ECONOMIA E MANAGEMENT DELLE FILIERE ALIMENTARI SOSTENIBILI</a>	50	5
		<b>DEPARTMENT OF MATHEMATICAL, PHYSICAL AND COMPUTER SCIENCES</b>		
Italian	Bachelor Degree (3 years)	<a href="#">FISICA</a>	20	3
Italian	Bachelor Degree (3 years)	<a href="#">INFORMATICA</a>	36	5
Italian	Bachelor Degree (3 years)	<a href="#">MATEMATICA</a>	20	5
		<b>DEPARTMENT OF MEDICINE AND SURGERY</b>		

Italian	Bachelor Degree (3 years)	<a href="#">SCIENZE MOTORIE, SPORT E SALUTE</a>	20	0
Italian	Bachelor Degree (3 years)	<a href="#">SCIENZE E TECNICHE PSICOLOGICHE PER LE SFIDE CONTEMPORANEE</a>	50	0
		<b>DEPARTMENT OF VETERINARY SCIENCE</b>		
Italian	Bachelor Degree (3 years)	<a href="#">SCIENZE ZOOTECNICHE E TECNOLOGIE DELLE PRODUZIONI ANIMALI</a>	20	0
Italian	Bachelor Degree (3 years)	<a href="#">TECNOLOGIE E GESTIONE DELL'IMPRESA CASEARIA</a>	20	0

## Requirements

**Admissions requirements:** to be admitted to the First-cycle Degree courses you need to have:

- at least **12 years of schooling** completed;
- secondary school diploma deemed suitable; or
- enrolment in the final year of secondary school with the prospect of sitting the exam for the final qualification **by 30 July 2025**.

### Language requirements:

**To attend the courses taught in Italian**, it is compulsory to pass an Italian language test at the University of Parma or to provide a B2 Italian level certification as per [CEFR](#). The language certification must be added in the attachments sent for the pre-evaluation procedure. You need to obtain it before the Enrolment. Students with a lower level of Italian will not pass the language requirement and will not be enrolled.

**To attend courses taught in English**, it is mandatory to reach at least a B2 level (C.E.F.R.). The language certification must be added in the attachments sent for the pre-evaluation procedure. You need to obtain it before the Enrolment. Students with a lower level of will not be enrolled.

Are exempted to provide one of the following certifications:

- mother tongue students;
- students who have already undertaken at least one year of education in English. In this case it will be necessary to provide an English Proficiency letter, a letter issued by the university/institute on the student's language skills acquired for having attended at least one year of English language studies or Medium of Instruction

(MOI), an official document indicating the language in which the diploma or the degree was obtained.

## How to send your application for the pre-evaluation

Interested students can send their applications by attaching:

1. **Copy of passport** (only the page with personal data)
2. **Copy of High school diploma** duly legalized by the Italian Embassy of the country in which the qualification was awarded or apostilled by the competent administrative authority.
3. **Only If the high school degree has not yet been obtained, the Certificate of Enrolment** officially translated and legalized in English or Italian and **a letter from the school stating the date on which the candidate will complete her/his studies;**
4. **Transcript of Records (TOR):** the transcript of the last three years of high school to enter a Bachelor's degree program with **the reference scale of grades**
5. If you already have it, **language requirement certification**
6. If you do not have the language level required, please attach:
  - the declaration of belonging to one of the cases of exemption from the Italian language test (as per <https://www.universitaly.it/studenti-stranieri>), or
  - [declaration of intention](#) to take the Italian **language test at the University of Parma**

**SEND YOUR APPLICATION**

## How we evaluate your application

The evaluation will be carried out by a special commission that will assess your application as per the following criteria:

- a) consistency of subjects studied during the last three years of high school and their relevance to the chosen degree program, **max 5 points;**
- b) grades obtained, **max 3 points;**
- c) possession of Italian B2 language proficiency or possession of the ministerial requirements provided for exemption, **max 2 points;**
- d) in case of a tie, preference will be given to the youngest candidate, taking into consideration equal gender quotas.

## Final Evaluation

There are three possible outcomes of the evaluation:

1. **pre-admitted:** you have the complete list of requirements and you are among those ranked eligible for admission.
2. **pre-admitted with reservation:** you partially have the list of requirements. In this case, you will be admitted to the program once you will complete them depending on the availability of places.
3. **not admitted:** you do not meet the requirements, or you are in low rank position to be admitted considering the maximum number of quotas available per each program.

Only pre-admitted students will receive a **Letter of Acceptance** to be uploaded on the University portal to proceed with the VISA process.

Students pre-admitted to the program will need to pay the enrolment confirmation fee, equal to 156,00€ (**regional tax € 140.00 and virtual stamp duty € 16.00**) Information about payment deadlines will be sent together with the Letter of Acceptance.

### Deadlines to apply

You can apply from 20<sup>th</sup> January 2025 to 20<sup>th</sup> March 2025. You will receive the results of your application by the 3<sup>rd</sup> April 2025. The list of admitted will be published on the website ([link](#)).

### Contacts

For information about your application you can contact [admissions@unipr.it](mailto:admissions@unipr.it)

## First-cycle degree courses with National Test

You don't have to request the pre-evaluation in case of application to one of the following nationally-scheduled degrees:

### Courses in Italian language

#### *Bachelor's degree programs*

##### **Professioni sanitarie** (Health

*Professions*) information will be published at the [following page](#). Email contact [segreteria.medicina@unipr.it](mailto:segreteria.medicina@unipr.it)

##### **Architettura e rigenerazione sostenibile** (*Architecture regeneration sustainability*)

information will be published will be published at the [following page](#). Email contact [segreteria.ingarc@unipr.it](mailto:segreteria.ingarc@unipr.it)

#### *Single-cycle degree programs*

##### **Medicina e Chirurgia** (Medicine and Surgery) and **Odontoiatria** (School of Dental Medicine)

information will be published will be published at the [following page](#). Email contact [segreteria.medicina@unipr.it](mailto:segreteria.medicina@unipr.it)

##### **Medicina Veterinaria** (Veterinary

*Medicine*) information will be published will be published at the [following page](#). Email contact [segreteria.medicinaveterinaria@unipr.it](mailto:segreteria.medicinaveterinaria@unipr.it)

### Courses in English language

#### *Bachelor's degree programs*

##### **Dental Hygiene**

information will be published will be published at the [following page](#). If you are interested in this degree program, [you can express your interest](#) by accessing the format. You will then receive all information regarding the organization of the course itself. Email contact [dentalhygiene@unipr.it](mailto:dentalhygiene@unipr.it)

#### *Single-cycle degree programs*

##### **Medicine and surgery**

information will be published will be published at the [following page](#). Email contact [medicineandsurgery@unipr.it](mailto:medicineandsurgery@unipr.it)



## FAQ (FREQUENTLY ASKED QUESTIONS)

# CHECK THE GENERAL REQUIREMENTS

### General requirements to access the Italian University System

In order to access the Italian University System, it is mandatory to demonstrate the acquisition of:

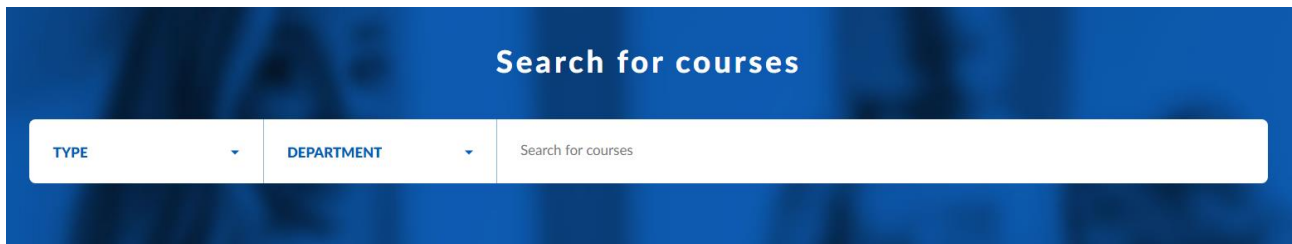
- At least **12 years of compulsory education**;
- The **High school diploma**, for admission to Undergraduates degree programs (Bachelor's and Single-Cycle Degrees)
- The **Bachelor's degree qualification**, for admission to Master's degree programs;
- **B2 certification of Italian language** (as defined by the Common European Framework of Reference for Languages, or [CEFR](#)) for study programmes taught in Italian, to be submitted by the date of Enrolment;
- **B2 certification of English language** (CEFR) for study programmes taught in English language, to be submitted by the date of Enrolment;

**Non-EU citizens with a residence permit other than the one for study purposes**, are asked to follow the same application procedures as EU students.

# CHOOSE YOUR COURSE

## Course catalogue

*To check the full list of degree courses available, click the box below:*



The image shows a search interface for courses. It features a dark blue header with the text "Search for courses" in white. Below the header is a white search bar with three sections: "TYPE" with a dropdown arrow, "DEPARTMENT" with a dropdown arrow, and a text input field containing the placeholder "Search for courses".

# REGISTER ON THE UNIVERSITY SYSTEM

Regardless of the selected course, before submitting your pre-evaluation request, you must proceed with the registration on the University Information System (**ESSE3**) and activate your University credentials. More details can be found at the [following link](#).

[To register on esse3 click here](#)

[To activate your University credentials click here](#)

Only after completing the registration and obtaining your credentials, you will be able to access the pre-evaluation process. Below you will find the explanation of the different pre-evaluation procedures to access one of the many study courses offered by the University of Parma.

For more information: [Register in our System Esse3](#)

For computer problems relating to the online enrolment procedure or the retrieval of your Esse3 access credentials, please send an email to [helpdesk.studenti@unipr.it](mailto:helpdesk.studenti@unipr.it)

## RECEIVE YOUR ADMISSION LETTER AND PAY THE FIRST TUITION FEES' INTALLMENT

### Admission Letter

You will receive the Admission letter only if you will pass the first assessment phase. This letter will be useful for you to request your VISA to the local Embassy or Consulate.

**Do not forget** to upload it on Universitaly.

You will receive the Admission letter as soon as possible depending on the number of applications received.

### Pre-Enrolment and enrolment fee

Once received the positive outcome of your pre-evaluation, **pre-enrol on ESSE3** (University information system) and proceed to pay the **enrolment fee** within the deadlines. More details can be found at the dedicated [page](#).

[To pre-register click here](#)

Once you enter your personal area on ESSE3, in order **to pre-enrol** follow MENU > REGISTRAR'S OFFICE > ENROLMENT.

Only after you have completed this procedure, you will be able to access MENU > REGISTRAR'S OFFICE > PAYMENTS and proceed with the **payment of the €156.00 enrolment fee**.

**ATTENTION! If the enrolment fee is not paid by the deadline, it won't be possible to continue with the registration process and the issuance of the tax code in Italy.**

Those who fail to confirm their place and pay the fee will be considered as having renounced their option and will lose their place in the ranking.

If after payment you fail to obtain the VISA, you can [request a refund](#) from ER.GO (Regional Company for the Right to Higher Studies).

# REQUEST YOUR VISA ON UNIVERSITALY

## Universitaly and Visa Application to the Embassy

Check which kind of VISA you need at the [Farnesina website](#) (Ministry of Foreign Affairs and International Cooperation).

To obtain [the Study Entrance Visa](#) (Type D), it is **mandatory to pre-register online through the [Universitaly Portal](#)**.

Select the University of Parma and then specify the Embassy/ Consulate. Once the University will submit its evaluation you will be able to download your “Summary” to be submitted to the Embassy/Consulate. Remember to upload the “**Acceptance Letter**” if requested by your study programme!

This pre-registration does not guarantee the right to admission, you will need to meet all the other requirements as well.

The final decision on the issue of a visa for study purposes is the exclusive jurisdiction of the diplomatic/consular Mission.

# MANDATORY DOCUMENTS

Procedures related to final enrolment can be completed only at the [Student's Offices](#) by delivering in person the following documents:

1. **Copy of the visa issued to enter Italy**
2. **Copy of passport;**
3. **Copy of Residence Permit or Receipt of Permit;**
4. **Copy of Tax Code**, issued by the Agenzia delle Entrate or the Italian Embassy/Consulate with jurisdiction over your territory. Self-generated tax codes using Internet simulators are not allowed.
5. **Original of the high school diploma (to access undergraduates programs)**, duly legalized by the Italian Embassy of the country in which the qualification was awarded, or apostilled by the competent administrative authority;
6. **Original of the bachelor's degree certificate (to access master's degree programs)** duly legalized by the Italian Embassy of the country in which the degree was awarded, or apostilled by the competent administrative authority;
7. **Translation of the diploma or degree into Italian or English**, also legalized or apostille\*;
8. **Transcript of Records (TOR)**: transcript in Italian or English of the exams of your bachelor's studies to enter a Master's degree program, or the transcript of the last three years of high school to enter a Bachelor's degree program;
9. **Certificate of successful completion of the academic aptitude test**, if required for university entrance in the country of origin;
10. **Declaration of value** issued by the Italian Embassy or, in its place, **attestation of comparability** issued by the center [ENIC-NARIC Italian \(Cimea\)](#).
11. **B2 Italian language certificate**, in case of enrolment in degree programs taught in Italian.
12. **B2 English language certificate**, in case of enrolment in degree programs taught in English

# ENROLMENT

Once you'll collect all the mandatory documents, you can finalize your enrolment  
in your Student Office

You will receive your number of MATRICOLA and you'll be a Student of the University of Parma!

Remember that you have time until the **27th of February 2026** to bring to your student office any  
missing document and to finalize your enrolment.

# WELCOME TO PARMA

Once you collect your VISA and you arrive in Italy we can help you with your **tax code and resident permit** that you need to request within 8 days from your arrival in Italy! Remember that they are mandatory for the final enrolment and not during the evaluation process.

[Book your service](#)

## USEFUL INFORMATION FOR STUDENTS

[Tax code](#)

[Resident Permit](#)

[Accommodation](#)

[Student Card](#)

[University Library System](#)

[Affiliated canteens](#)

[Amounts of fees and contributions](#)

[ER.GO benefits and scholarships](#)

[Living the city](#)

[Cost of living in Parma](#)



## CONTACTS

E-mail: [admissions@unipr.it](mailto:admissions@unipr.it)

**Mobility, Welcome and International Students Unit**  
Piazzale San Francesco 2 - 43121 Parma