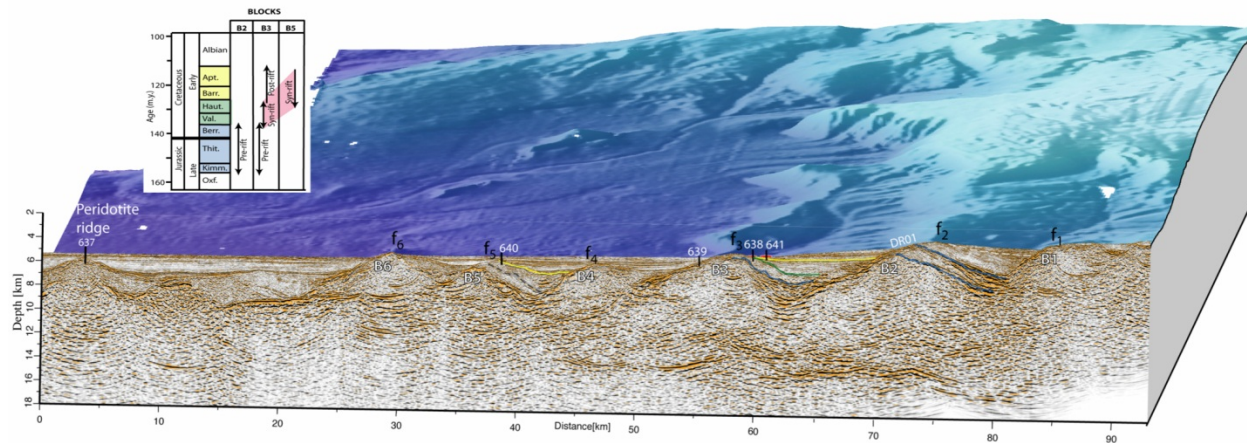


Tectonics of Mid Ocean Ridges, Rifted Continental margins, and Subduction Zones

ICREA Prof. Cesar R. Ranero, *Barcelona Center for Subsurface Imaging (Barcelona-CSI, CSIC)*



Parma, 4-7 March 2013,

Dipartimento di Fisica e Scienze della Terra
 "Macedonio Melloni", Plesso Geologico
 Campus Universitario 157/A, **room LAB 2**



INFO: <http://www.difest.unipr.it/>
luca.clemenzi@nemo.unipr.it

Monday morning (10 - 13)

- Introduction to methods to marine geological settings
 - Multichannel seismic reflexing
 - Wide angle seismic data
 - Multibeam bathymetry
 - Side Scan Sonar imagery
 - Potential fields
 - Sediment Coring and rock dredging

- Mid Ocean Ridges (MOR) and back arc basins

Monday Afternoon (14 - 17)

Interpretation of maps of slow and fast spreading MORs

Tuesday morning (10 - 13)

- The incoming plate of subduction zones and the fate of ocean lithosphere

- Tectonics of convergent margins: accretion processes versus

tectonic erosion processes

Tuesday Afternoon (14 - 17)

Interpretation of 1 profile from an accretionary system and 1 from an erosional system of convergent margins

Wednesday morning (10 - 12)

- The hydrogeological system of convergent margins: implication for long term tectonics and seismogenesis
- Mass wasting processes in continental margins and natural hazards

Wednesday Afternoon (14 - 17)

Interpretation of maps of convergent margins

Thursday morning (10 - 13)

- Rifting of continental margins
- The formation of the western Mediterranean basins

Thursday Afternoon (14 - 17)

Interpretation of 1-2 profile from a rifted margin